

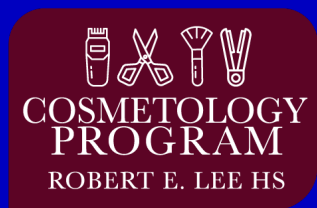
Human Services Career Cluster

The Human Services Career Cluster focuses on preparing individuals for employment in career pathways that relate to families and human needs such as counseling and mental health services, family and community services, personal care services, and consumer services.



Program of Study Options by Campus	GCM	REL	RSS	SCTHS
Cosmetology	--	DC	--	--

AC—Courses available to academy students only; application process required in 8th grade; DC—College courses offered on campus; application process required before beginning college classes additional college fees may apply; LC—Upper-level course must be taken at a Lee College campus; application process required before beginning college classes.



Cosmetology Program

013-PS-Cosmetology

@ REL



The Cosmetology and Personal Care Services regional program of study introduces CTE learners to knowledge and skills related to providing beauty and personal care services. CTE concentrators may learn about or practice managing personal care facilities and coordinating or supervising personal service workers.

Secondary Courses for High School Credit

Level 1

- Dual Credit Cosmetology Courses with Lee College

Level 2

- Dual Credit Cosmetology Courses with Lee College

Level 3

- Dual Credit Cosmetology Courses with Lee College

Level 4

- Dual Credit Cosmetology Courses with Lee College

Postsecondary Opportunities

Certificate/License

- Certified Aesthetic Laser Operator
- Cosmetologist
- Certified Spa Supervisor
- Nail Technician/Specialist and Manicurist

Associates Degrees

- Cosmetology/Cosmetologist, General
- Aesthetician/Esthetician and Skin Care Specialist
- Salon/Beauty Salon Management/Manager
- Cosmetology, Barber/Styling, and Nail Instructor

Work-Based Learning and Expanded Learning Opportunities

Exploration Activities

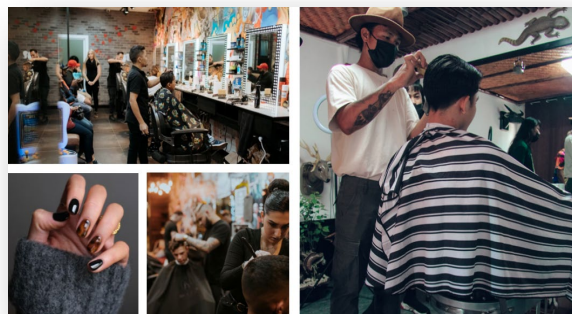
- Participate in SkillsUSA

Work-Based Learning Activities

- Job shadow a cosmetologist
- Work part-time at a salon, spa, or barbershop

Industry-Based Certifications

- Cosmetology Operator License



Aligned Occupations

Occupations	Median Wage	Annual Openings	% Growth
First-Line Supervisors of Personal Service Workers	\$36,941	1,634	24%
Barbers	\$28,267	348	14%
Hairdressers, Hairstylists, and Cosmetologists	\$21,507	3,489	22%
Manicurists and Pedicurists	\$21,715	418	45%
Shampooers	\$18,720	139	24%
Skincare Specialists	\$26,437	637	22%

Successful completion of the Cosmetology and Personal Care Services regional program of study will fulfill requirements of the Public Service endorsement.